

QUANTUM LP - QULPX

TINY-APERTURE RECESSED ARCHITECTURAL LED LUMINAIRE

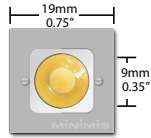
MINIM.IS/quantum



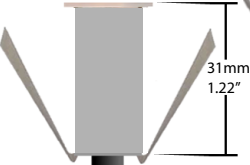
FOR RECESSED
INSTALLATION
INTO ALL
MATERIALS



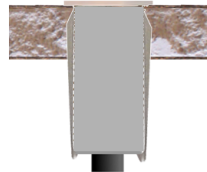
SHARP
CUTOFF
SPOT
58°



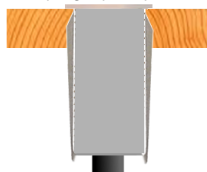
With spring-clip at rest



With spring-clip compressed in drywall



With spring-clip compressed in wood



IP67. Patent pending.

MINIMIS
815 A BRAZOS #377
AUSTIN TEXAS USA

Tel: +1 512 402 7300

MINIM.IS/contact

Made somewhere in AMERICA.

QUANTUM LP is arguably the world's smallest architectural LED recessed luminaire for press-fit installation into any material, including drywall, wood, metal, tile, granite, concrete, stone, etc. Ideal for decorative and accent lighting.

Consisting of precision-milled titanium, QUANTUM LP is suitable for IP67 installation in any application, including extreme environments such as marine, arctic, and desert conditions. Features a minuscule 9mm (0.35") diameter aperture with a custom-milled Milanese sharp-cutoff metallic cup reflector, for optimum throw distance and bleed-free beam uniformity.

Because of its tiny size - with fixture dimensions of only 0.75" x 0.75" (19mm x 19mm) - QUANTUM LP is virtually 'all light and no fixture', making it as appropriate for use in historic projects, as it is in modern design projects.

The MINIMIS patent-pending design features a fully-integrated, water-resistant lens+LED module that is resistant to full water immersion and temperatures to -17°C, eliminating the need for gaskets that can crack and fail. However, not suitable for IP 68.

Installation instructions: Drill - or water-jet a clean 17mm Ø hole in your target surface. Feed pigtail through hole. Make final adjustments of position, and press into place using spring-clip's friction hold.

Connect to a 12VDC constant voltage power source per local and federal code. Three year repair or replacement warranty.

IMPORTANT:

Because of open, cup-like reflector, QUANTUM LP is not suitable for up-light orientation in wet locations.

Accent lighting	Uplighting
Cabinetry lighting	Wall grazing
Shower lighting	Decorative
Floor lighting	Safety lighting
Deck lighting	Pathway lighting
Soffit lighting	Stairwell lighting
Luxury marine	Luxury aviation

Material: Precision, hand-milled titanium

Color temp: Warm white (3025° Kelvin) CRI >80
CRI >95 available in 2018

Luminous flux: 19 lumens

Lens: 58° sharp-cutoff metallic reflector

Pigtail: 36" standard double-sheathed 18-2 pigtail

Models: QULPW - warm white

Power supply 12volt DC (constant voltage)
(not included): See: <http://minim.is/power-lp-kit.htm>

Not a UL-Listed fixture.

Warm white: +/- 100°K

 **MINIMIS**
WWW.MINIM.IS