

MP-SERIES POWER KIT

DIMMABLE POWER KIT FOR MP-SERIES LUMINAIRES

MINIM.IS/pkmp.html

PKMP0115

For powering 1 to 15 MP-series Luminaires.

All components in this kit are IP67 + UL+CE+EN listed

- a) one (1) 60-watt 12 volt DC class-II SELV dimming transformer
- b) one (1) weatherproof enclosure + lid for transformer
- c) one (1) weatherproof 15-pair junction enclosure + lid
- d) four (4) quick-install jumper bars

DIMENSIONS:

Driver/Transformer: 5.9" x 2.0" x 1.4" (150 mm x 53mm x 35mm)
 Driver enclosure: 8.7" x 6.7" x 4.3" (220mm x 170mm x 110 mm)
 Terminal enclosure: 7.87" x 4.72" x 2.95" (200mm x 120mm x 75 mm)



PKMP1630

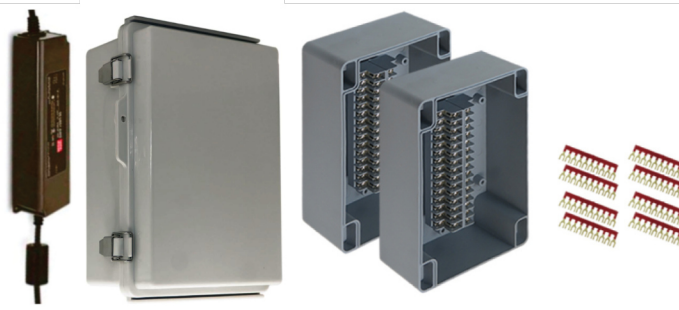
For powering 16 to 30 MP-series Luminaires.

All components in this kit are IP67 + UL+CE+EN listed

- a) one (1) 60-watt 12 volt DC class-II SELV dimming transformer
- b) one (1) weatherproof enclosure + lid for transformer
- c) two (2) weatherproof 15-pair junction enclosure + lid
- d) eight (8) quick-install jumper bars

DIMENSIONS:

Driver/Transformer: 5.9" x 2.0" x 1.4" (150 mm x 53mm x 35mm)
 Driver enclosure: 8.7" x 6.7" x 4.3" (220mm x 170mm x 110 mm)
 Terminal enclosure: 7.87" x 4.72" x 2.95" (200mm x 120mm x 75 mm)



FOR USE ONLY WITH MP-SERIES (PORE MP, STOMA MP, ETC.)

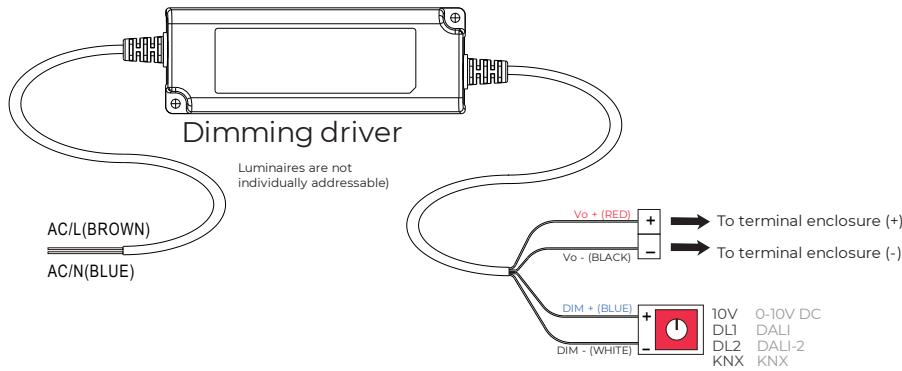
NOTE: Power supply must not accommodate more than thirty luminaires / apertures.

NOTE: Our luminaires are only dimmable on the low-voltage side. Mains dimming will invalidate your warranty.

For configurations of more than 30 luminaires / apertures, additional, complete power kits are required, at 30-aperture increments.

Recommended to be installed by an electrician with knowledge and experience installing low-voltage lighting, and the accompanying voltage-drop and wire-gauge limitations.

MINIMIS MP-Series luminaires are UL listed solely for operation on Class-II drivers of 12vDC constant voltage. Operation on drivers other than Class-II will invalidate your warranty.



HOW TO SPECIFY. POWER KIT EXAMPLE CODE: PKMP-0115-10V

PROD. FAMILY ^{1 4} DIMMING PROTOCOLS

PKMP	O115	FOR 1 TO 15 LIGHTS	10V	0-10VDC + 10V PWM + 12V Resistance ²
	1630	FOR 16 TO 30 LIGHTS	DL1	DALI ³
			DL2	DALI-2 ³
			KNX	KNX ³

1. MP and LP families are not interoperable; they require separate power sources.
2. PWM and 12V resistance dimming do not require use of DIM+ / DIM-
3. Subject to availability.
4. A minimum of three (3) luminaires are required to meet dimming "minimum load" obligations. Dimming less than three (3) will invalidate warranty.



MINIMIS
 1661 WEST AVE #398002
 MIAMI BEACH 33239

WWW.MINIM.IS
 +1 305 503 5779

