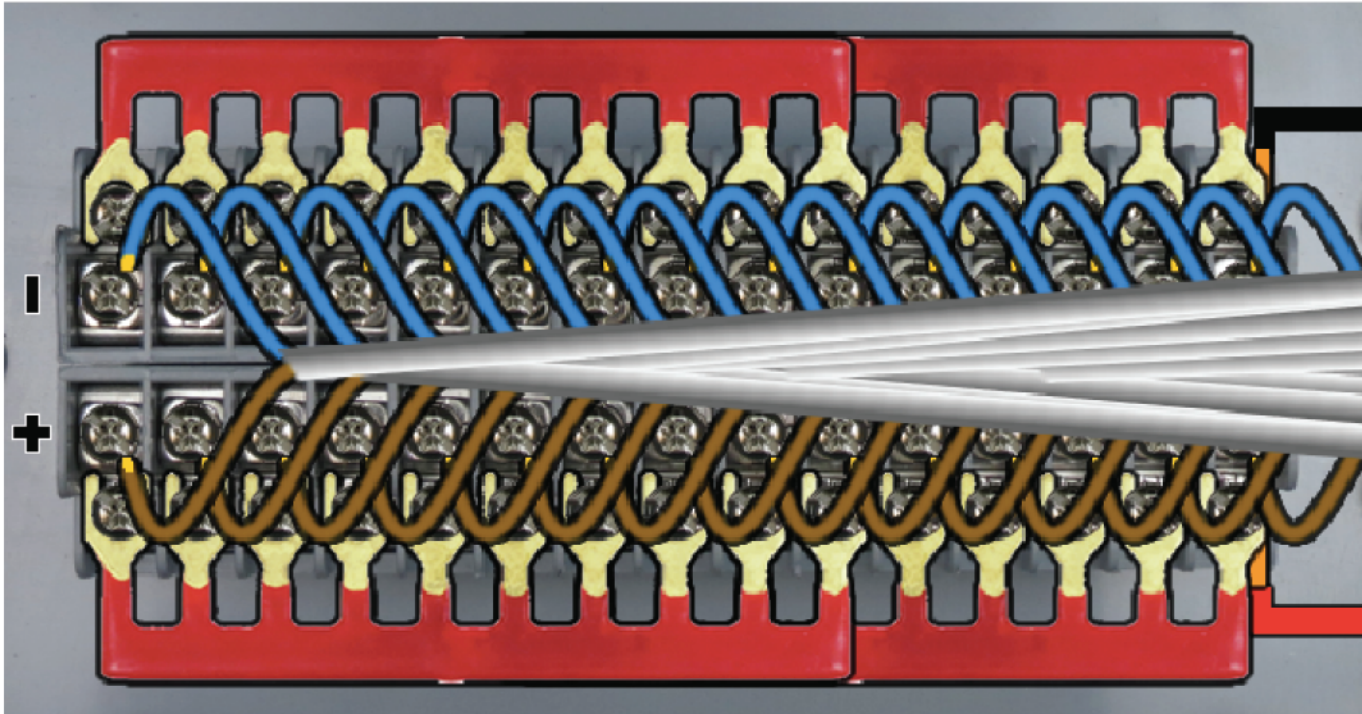


MINIMIS LP POWER KIT



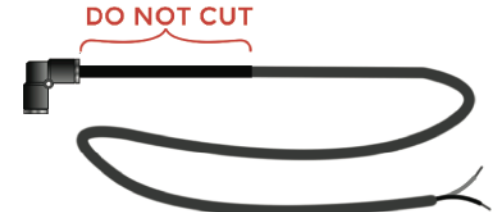
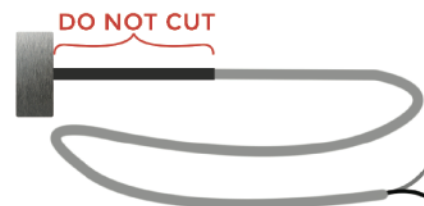
SUGGESTED INSTALLATION GUIDELINES and AVAILABLE KITS and ACCESSORIES

NOTE: the information included in this document is to be understood only as suggested guidelines for installation. Before installing, consult a licensed electrician to ensure proper safety procedures, and compliance with local and national codes and ordinances. **Always wear eye protection.**

PRE-INSTALLATION CHECKLIST

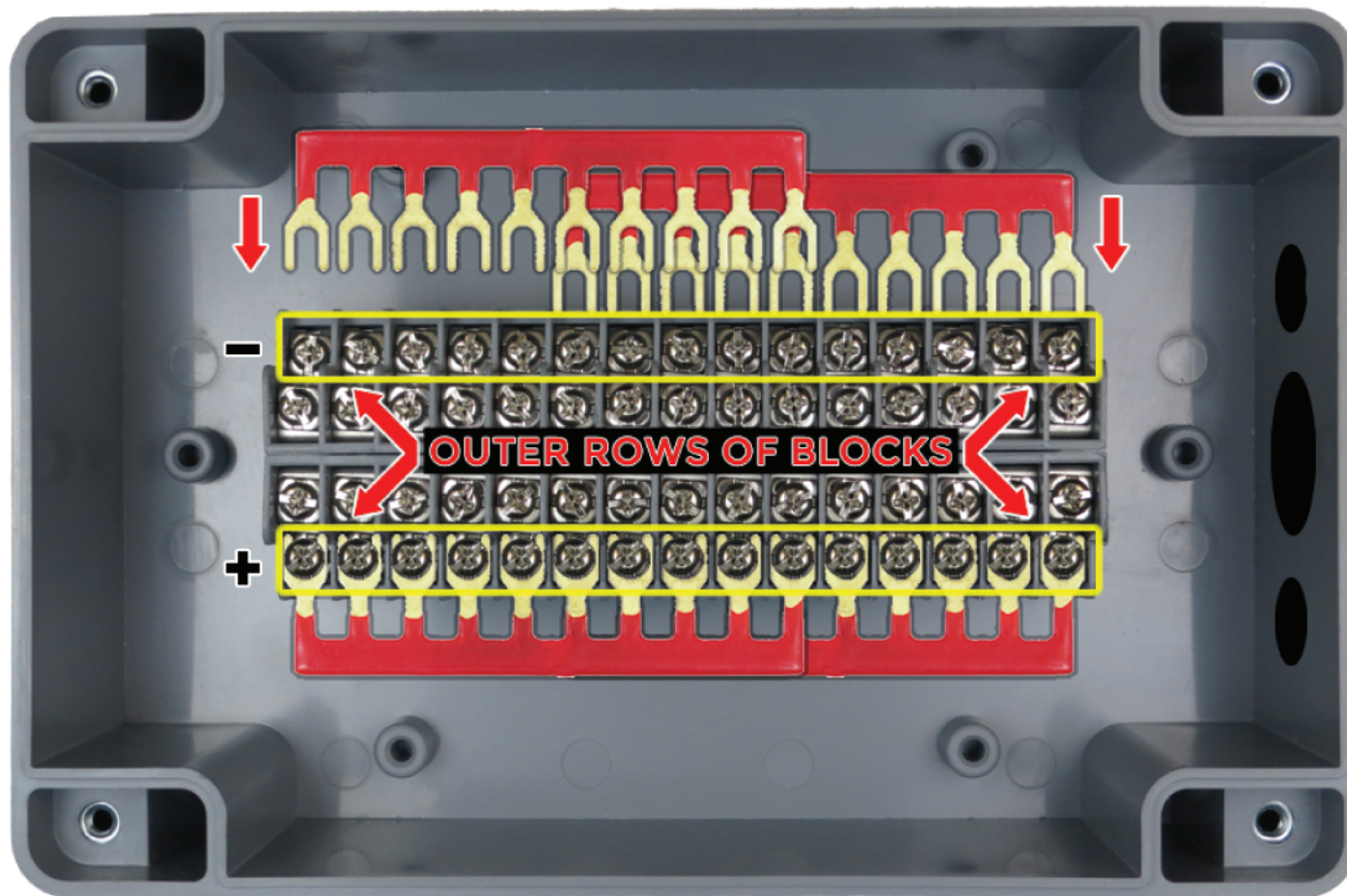
- 1) Always wear eye protection.
- 2) Wear gloves, if necessary.
- 3) Consult a licensed electrician about proper safety procedures and local and national codes and ordinances.
- 4) Ensure that your 110v/277v AC power source is operational and conforms to all codes and ordinances.
- 5) Inspect the labeling on the power supply to ensure that it is 12 volt DC. If it indicates 24 volt DC or any other voltage that is not 12 volt DC, do not continue with the installation, and contact us immediately.
- 6) Take stock of your kit items, ensuring that you have correct quantities of each item, per your kit:
 - PKLP0115: one 12vDC power supply, one power supply enclosure + lid, one terminal enclosure + lid, four jumper bars.
 - PKLP1630: one 12vDC power supply, one power supply enclosure + lid, two terminal enclosures + lids, eight jumper bars.
 - PKLP3145: one 12vDC power supply, one power supply enclosure + lid, three terminal enclosures + lids, twelve jumper bars.
 - PKLP4660: one 12vDC power supply, one power supply enclosure + lid, four terminal enclosures + lids, sixteen jumper bars.

50/60Hz 50/60Hz	· OUTPUT: +12V ===	← YES
50/60Hz 50/60Hz	· OUTPUT: +24V ===	← NO
50/60Hz 50/60Hz	· OUTPUT: +48V ===	← NO

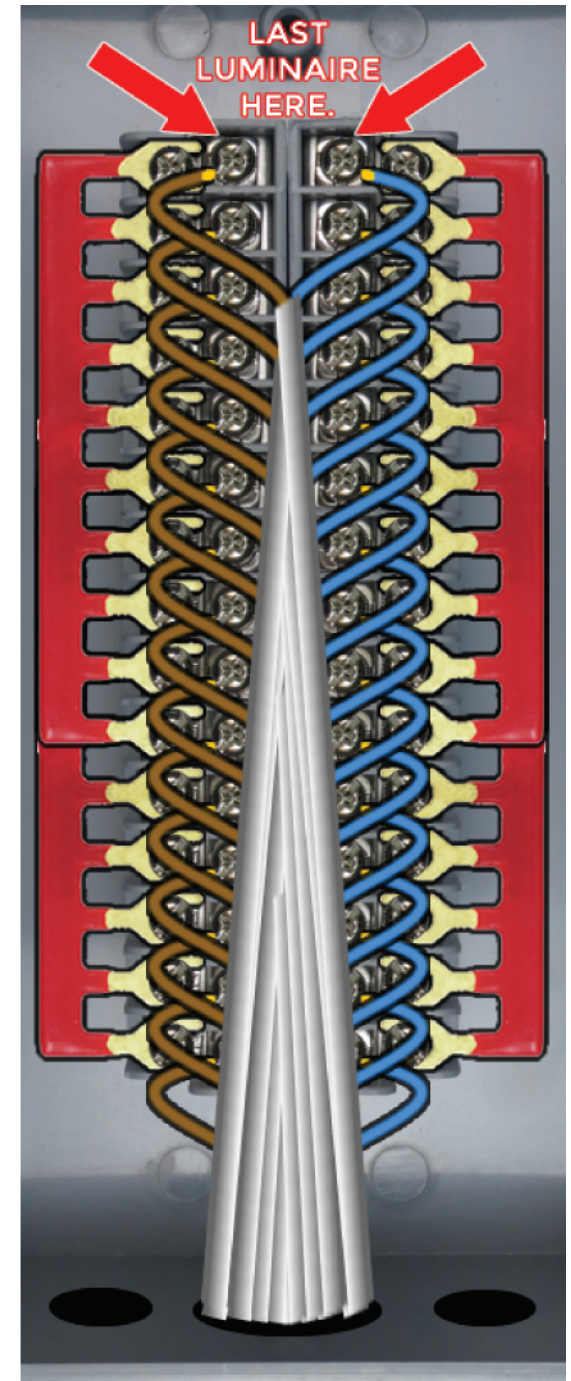
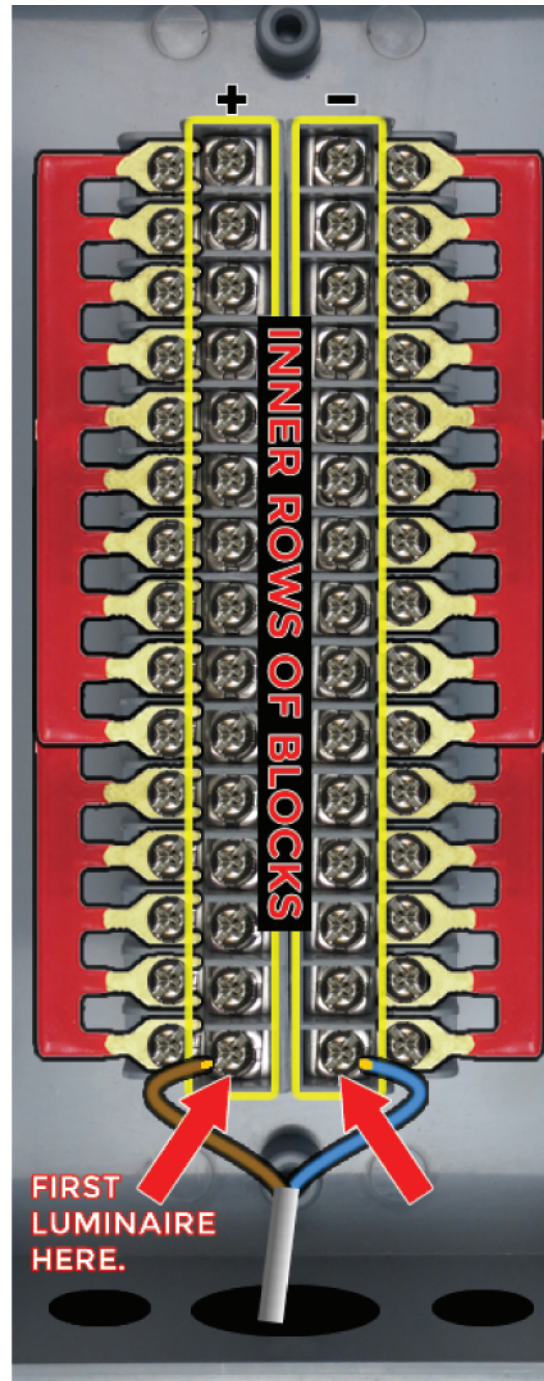
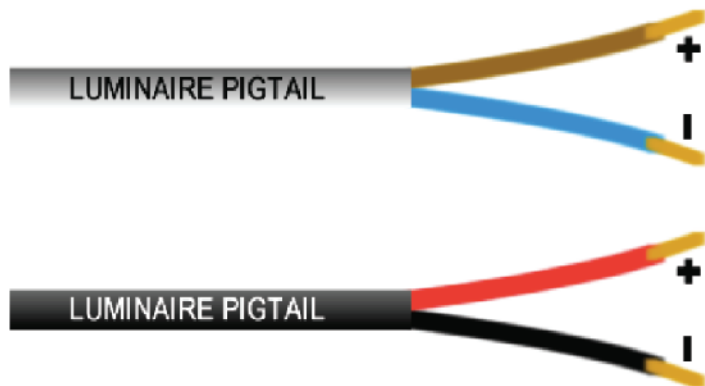


Warning: For THUMBTRACK LP without titanium stake, and for 1PUCK LP, do not cut the textured black section of the pigtail. Doing so will invalidate your warranty.

- 1) Set aside four red jumper-bars per terminal enclosure.
- 2) Loosen all the screws on the terminals
- 3) Insert the jumper-bars on the outer rows of blocks.
- 4) Allow jumper bars to overlap, ensuring that all fifteen blocks are bridged.
- 5) Tighten screws to secure jumper-bars in place.

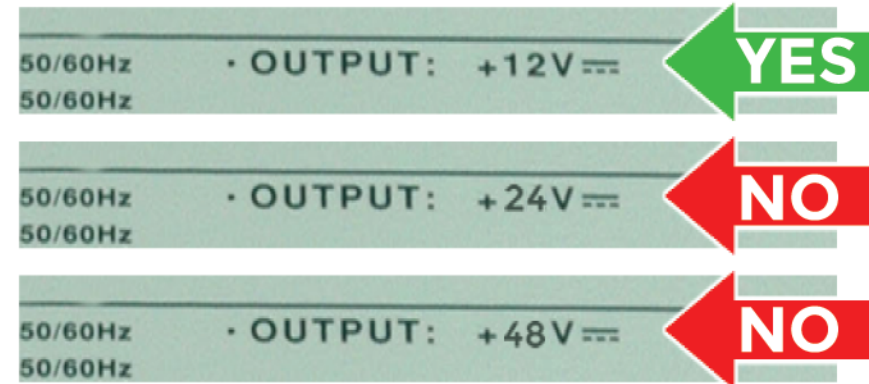
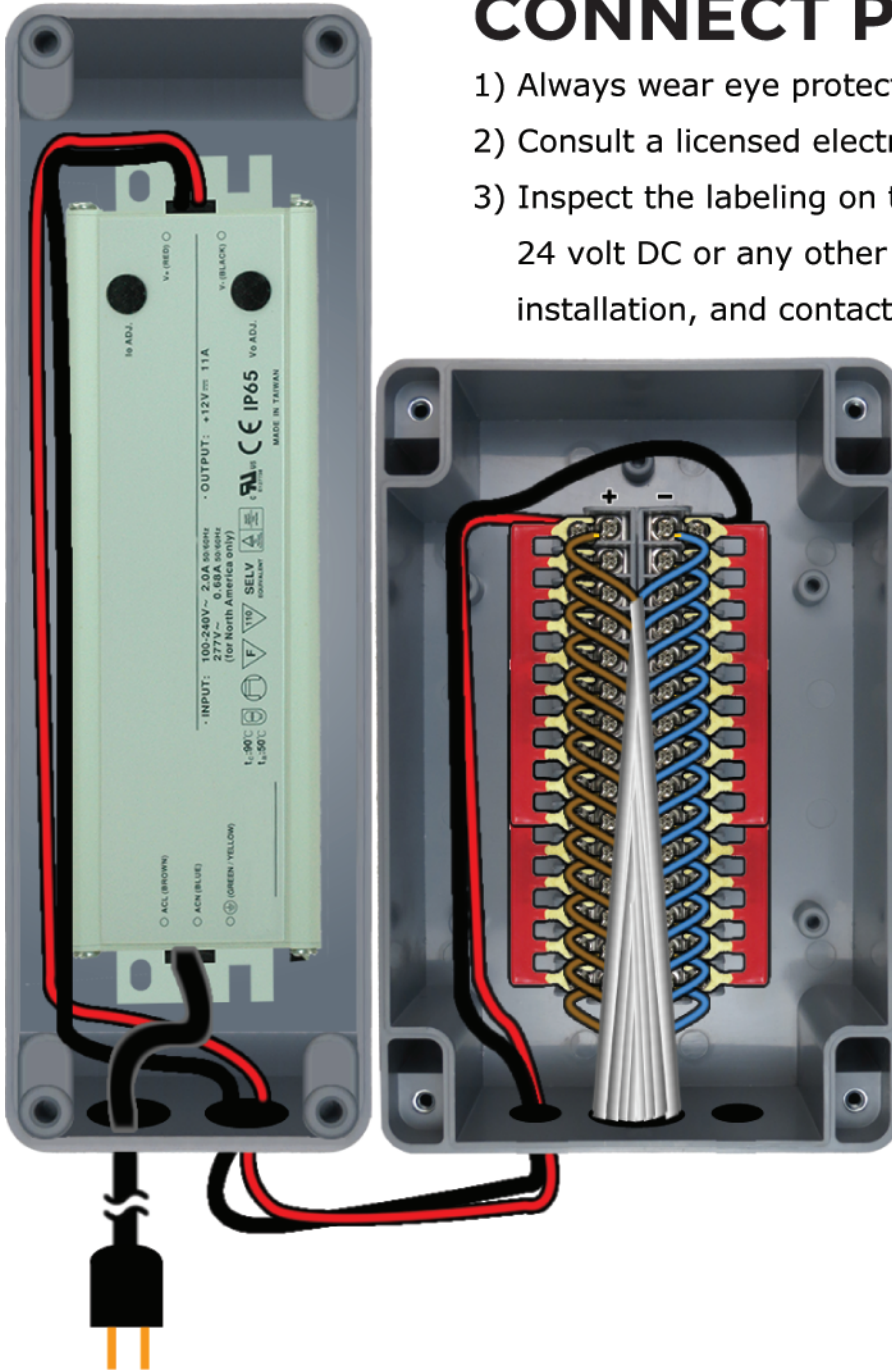


- 1) Strip the ends of the luminaire pigtails, exposing 1/4" (6mm) of copper lead.
- 2) Observing proper polarity, insert the pigtail leads into the inner rows of blocks, starting at the bottom.
- 3) Each consecutive pigtail overlaps the previous one. Screw blocks tight, to secure leads into place.
- 4) Repeat with the remaining fourteen luminaire pigtails, from bottom to top, illustrated to the right
- 5) Note: leads may come as:
(+) Red and (-) Black, or
(+) Brown and (-) Blue.



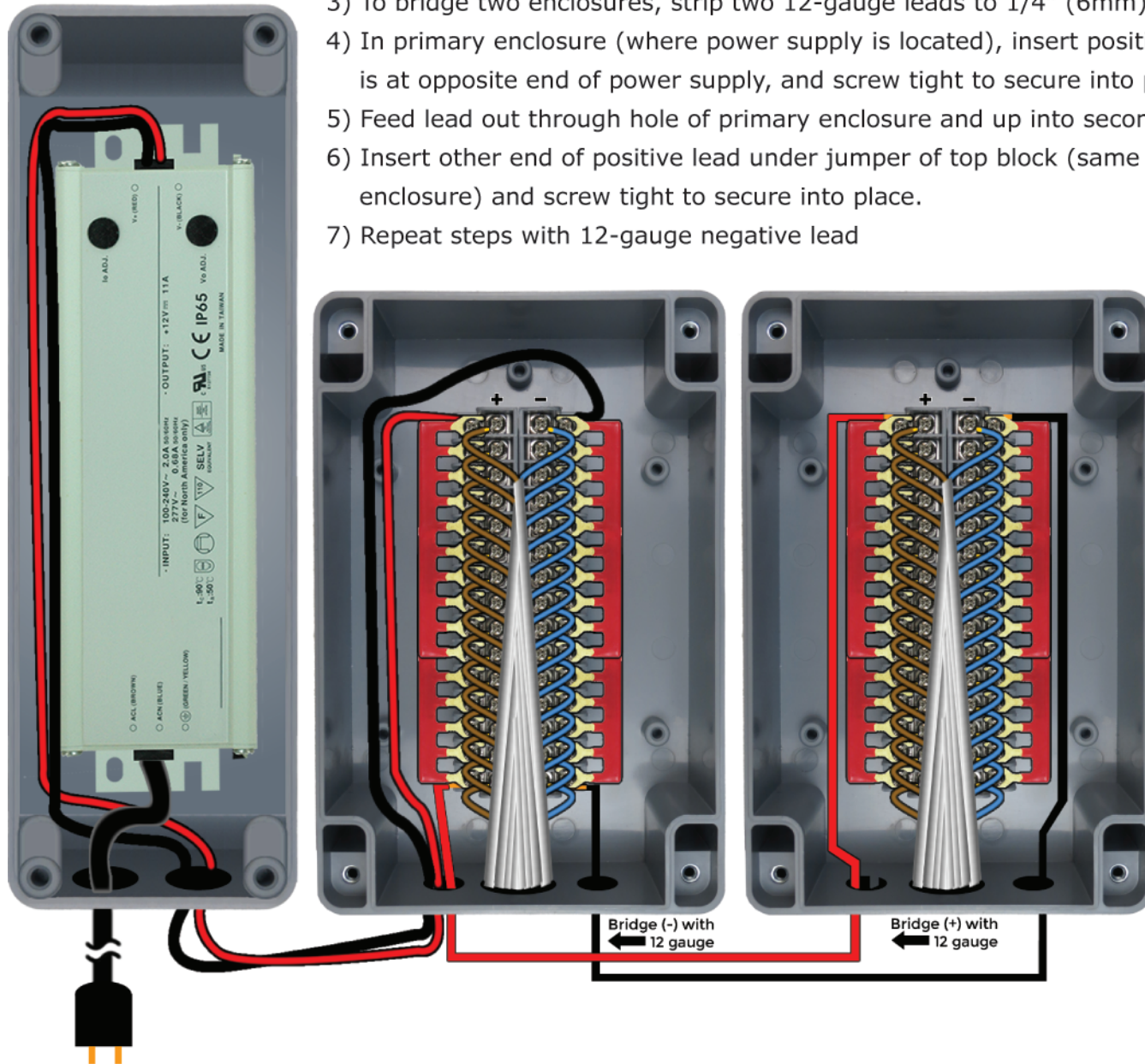
CONNECT POWER SUPPLY

- 1) Always wear eye protection.
- 2) Consult a licensed electrician on local and national safety codes and procedures.
- 3) Inspect the labeling on the power supply to ensure that it is 12 volt DC. If it indicates 24 volt DC or any other voltage that is not 12 volt DC, do not continue with the installation, and contact us immediately.
- 4) Place 12volt DC power supply inside the included, separate power supply enclosure.
- 5) Feed line-voltage cable through bottom of enclosure and splice appropriate plug end for corresponding line voltage.
- 6) Strip leads (V+ red and V- black) from the 12 volt end of power supply to 1/4" (6mm) of exposed copper.
- 7) Feed 12 volt leads out of power supply enclosure and up into primary enclosure.
- 8) Noting correct polarity, insert leads into top pair of terminal blocks, under the jumper bars.
- 9) Screw blocks tight, securing power supply leads into place.



BRIDGING TWO ENCLOSURES

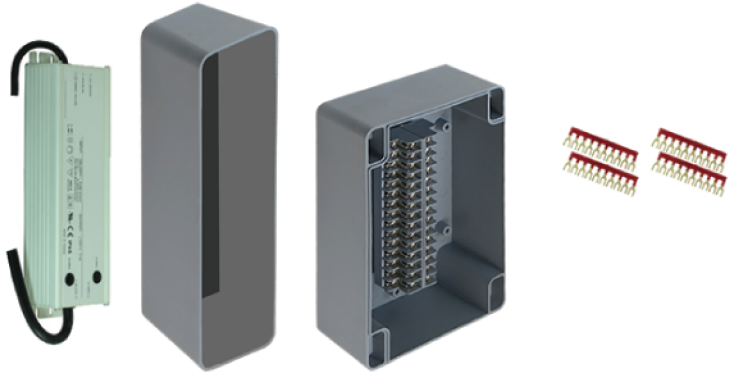
- 1) Always wear eye protection.
- 2) Consult licensed electrician to ensure compliance with local and national codes.
- 3) To bridge two enclosures, strip two 12-gauge leads to 1/4" (6mm) exposed copper of appropriate length.
- 4) In primary enclosure (where power supply is located), insert positive lead under jumper of block that is at opposite end of power supply, and screw tight to secure into place.
- 5) Feed lead out through hole of primary enclosure and up into secondary enclosure.
- 6) Insert other end of positive lead under jumper of top block (same position as power supply lead in primary enclosure) and screw tight to secure into place.
- 7) Repeat steps with 12-gauge negative lead



LP-SERIES POWER KITS

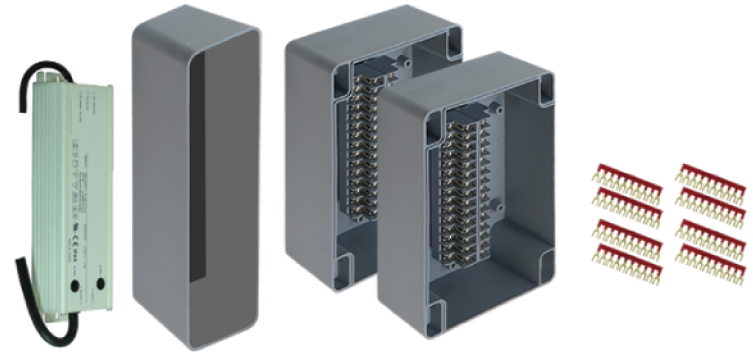
PKLP0115

LP-SERIES POWER KIT
FOR 1 TO 15 APERTURES



PKLP1630

LP-SERIES POWER KIT
FOR 16 TO 30 APERTURES

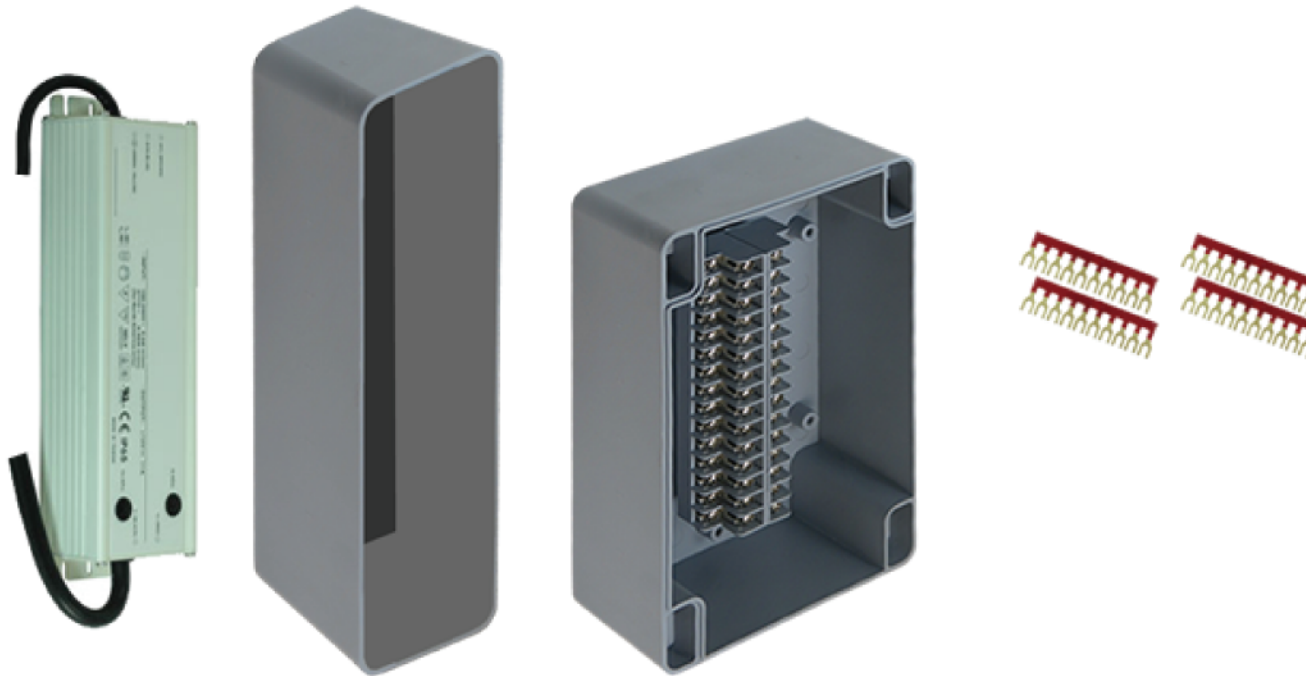


LP POWER KIT for 1 to 15 apertures

PKLP0115

- a) one (1) 60-watt 12vDC transformer
- b) one (1) weatherproof enclosure + lid for transformer
- c) one (1) weatherproof 15-pair terminal enclosure + lid
- d) four (4) quick-jump bus bars

Contact us for assistance.



Not included: MINIMIS luminaires, landscape wiring, tools.

Note: transformer must not accommodate more than thirty apertures. Accommodating more than thirty will invalidate your warranty.

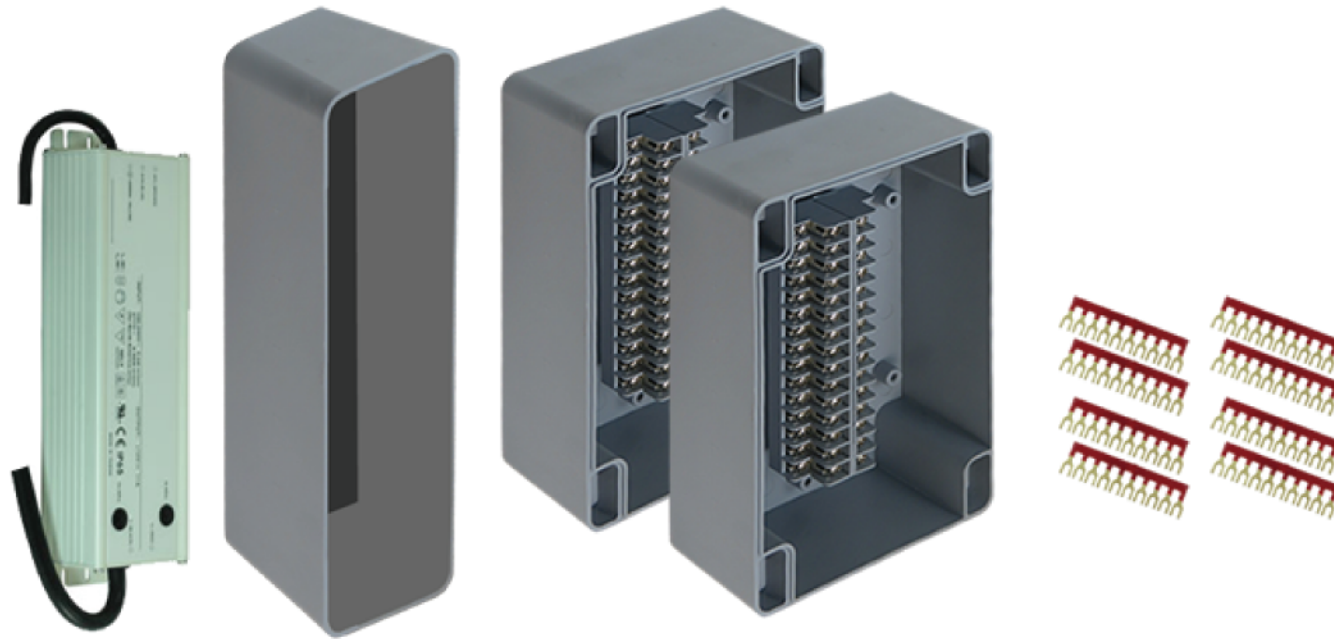
For configurations of greater than 60 apertures, additional complete power kits are required.

LP POWER KIT for 16 to 30 apertures

PKLP1630

- a) one (1) 60-watt 12vDC transformer
- b) one (1) weatherproof enclosure + lid for transformer
- c) two (2) weatherproof 15-pair terminal enclosure + lid
- d) eight (8) quick-jump bus bars

This configuration only valid for up to 20 BOLLARD LP luminaires.
Contact us for assistance.



Not included: MINIMIS luminaires, landscape wiring, tools.

Note: transformer must not accommodate more than thirty apertures. Accommodating more than thirty will invalidate your warranty.

For configurations of greater than 60 apertures, additional complete power kits are required.