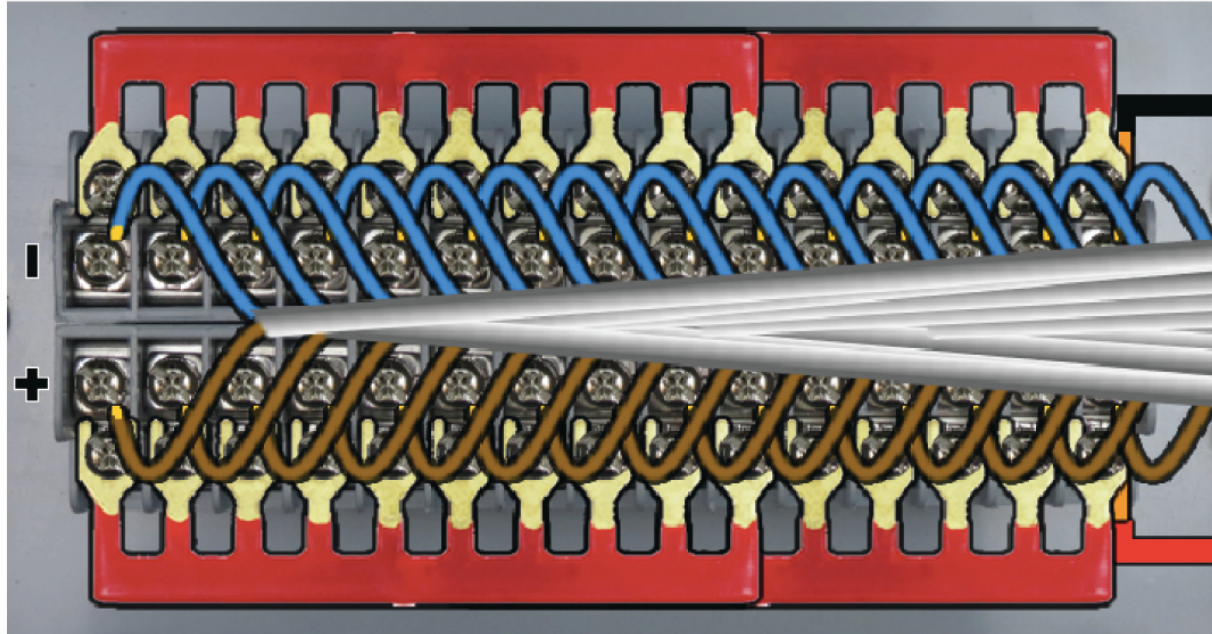


MINIMIS MP SERIES POWER KIT



SUGGESTED INSTALLATION GUIDELINES

FOR USE ONLY WITH MP SERIES LUMINAIRES.

NOT FOR USE WITH LP SERIES LUMINAIRES.

NOTE: the information included in this document is to be understood only as suggested guidelines for installation. Before installing, consult a licensed electrician to ensure proper safety procedures, and compliance with local and national codes and ordinances. **Always wear eye protection.**



WWW . MINIMIS . LIGHTING
INFO @ MINIM . IS
+1 305 503 5779

1661 WEST AVE
NO. 398002
MIAMI BEACH, FL 33239





**DIMMING IS ONLY
FOR MP-FAMILY
LUMINAIRES.**

**OPERATING
LP-FAMILY
ON DIMMER
WILL INVALIDATE
YOUR WARRANTY.**

**ANY DOUBTS?
CONTACT US
FIRST
WITH ANY
QUESTIONS.**

DIMMING AT THE MAINS SIDE (120V / 220V) WILL INVALIDATE YOUR WARRANTY.

MALFUNCTION AND/OR DAMAGE TO PRODUCT DUE TO EMPLOY OF INCOMPATIBLE OR DEFECTIVE DIMMING SYSTEM / PROTOCOL, OR DUE TO DISREGARD OF INSTALLATION INSTRUCTIONS WILL NOT BE COVERED UNDER WARRANTY.

CONTACT MINIMIS FOR RECOMMENDED POWER SOURCES.

IF FIXTURE IS TO BE INSTALLED WITH A DIMMER OR DIMMING CONTROL SYSTEM, CONSULT A DIMMING SYSTEM MANUFACTURER WITH MINIMUM LOAD BEFORE INSTALLING.

CONSULT US AT: +1 305 503 5779



WWW.MINIMIS.LIGHTING
INFO@MINIM.IS
+1 305 503 5779

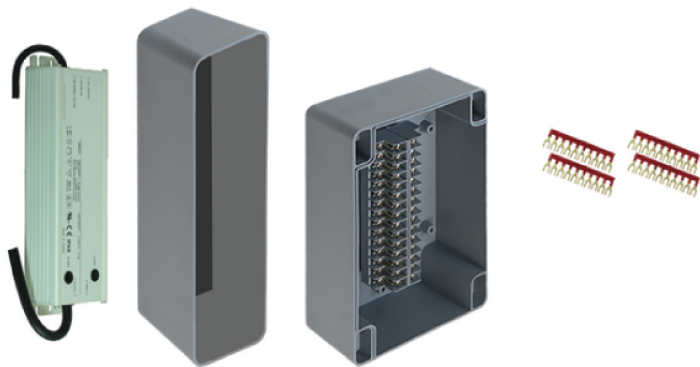
1661 WEST AVE
NO. 398002
MIAMI BEACH, FL 33239



MP SERIES POWER KITS

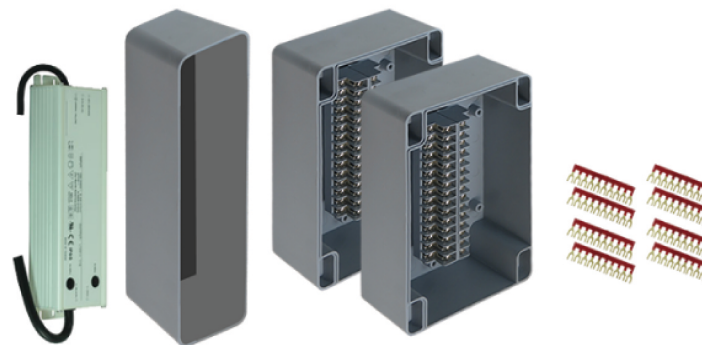
PKMP0115

MP SERIES POWER KIT
FOR 1 TO 15 APERTURES



PKMP1630

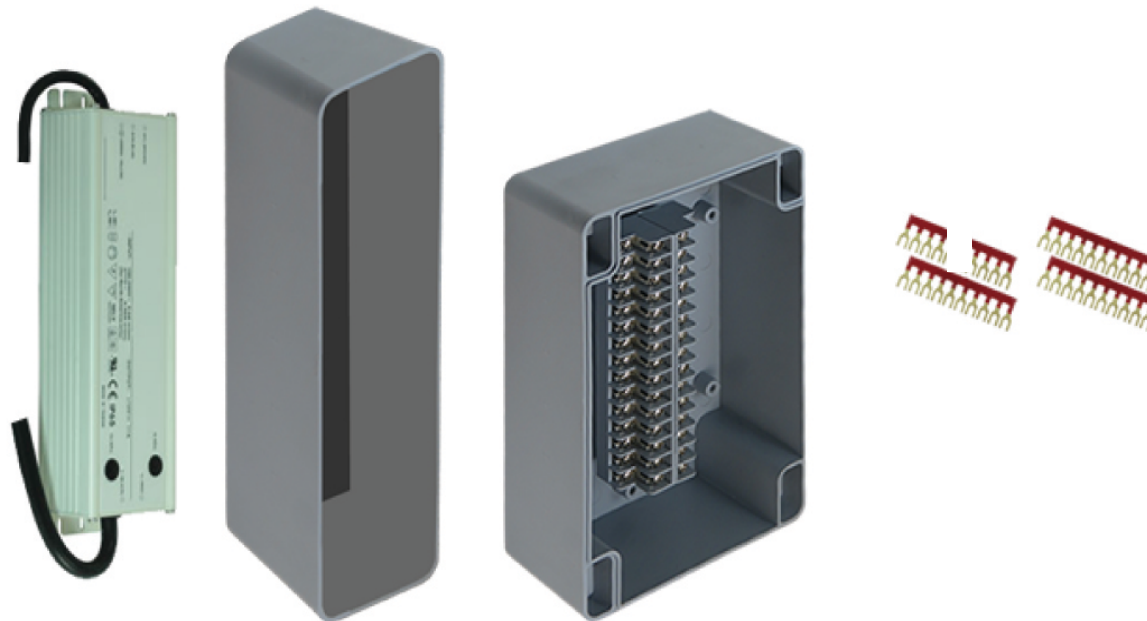
MP SERIES POWER KIT
FOR 16 TO 30 APERTURES



MP SERIES POWER KIT for 1 to 15 apertures

PKMP0115

- a) one (1) 60-watt 12vDC transformer
- b) one (1) weatherproof enclosure + lid for transformer
- c) one (1) weatherproof 15-pair terminal enclosure + lid
- d) four (4) quick-jump bus bars

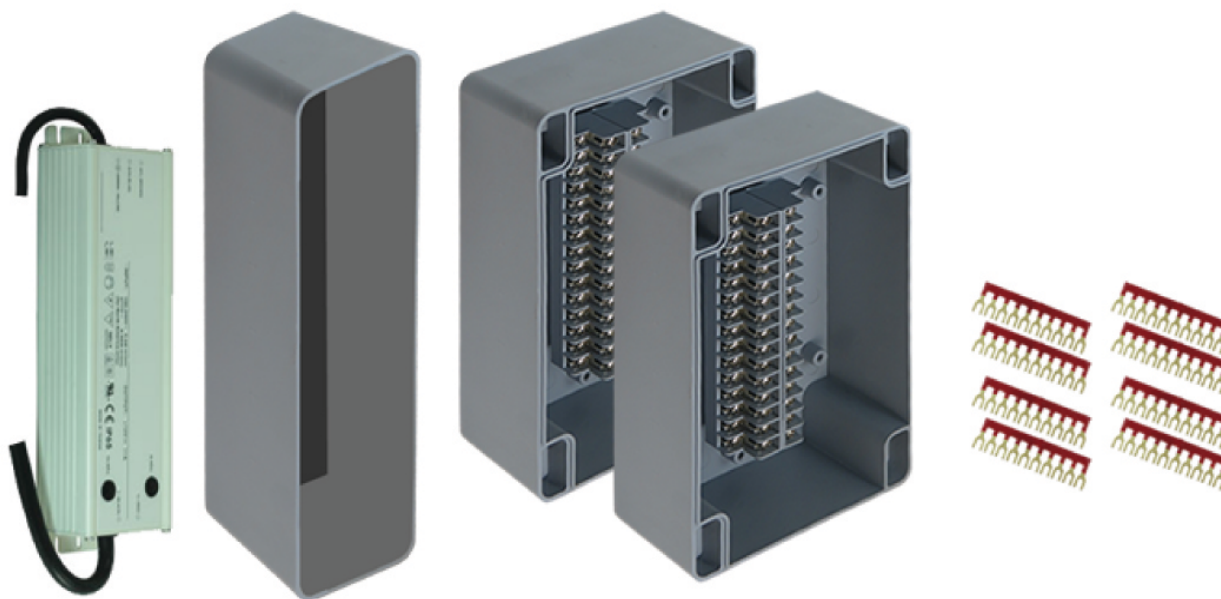


Note: transformer must not accommodate more than thirty apertures. Accommodating more than thirty will invalidate your warranty.
For configurations of greater than 30 apertures, additional complete power kits are required.

MP SERIES POWER KIT for 16 to 30 apertures

PKMP1630

- a) one (1) 60-watt 12vDC transformer
- b) one (1) weatherproof enclosure + lid for transformer
- c) two (2) weatherproof 15-pair terminal enclosure + lid



Note: transformer must not accommodate more than thirty apertures. Accommodating more than thirty will invalidate your warranty.

For configurations of greater than 30 apertures, additional complete power kits are required.



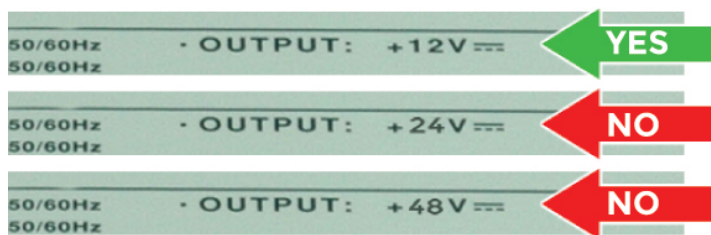
WWW . MINIMIS . LIGHTING
INFO @ MINIM . IS
+1 305 503 5779

1661 WEST AVE
NO. 398002
MIAMI BEACH, FL 33239

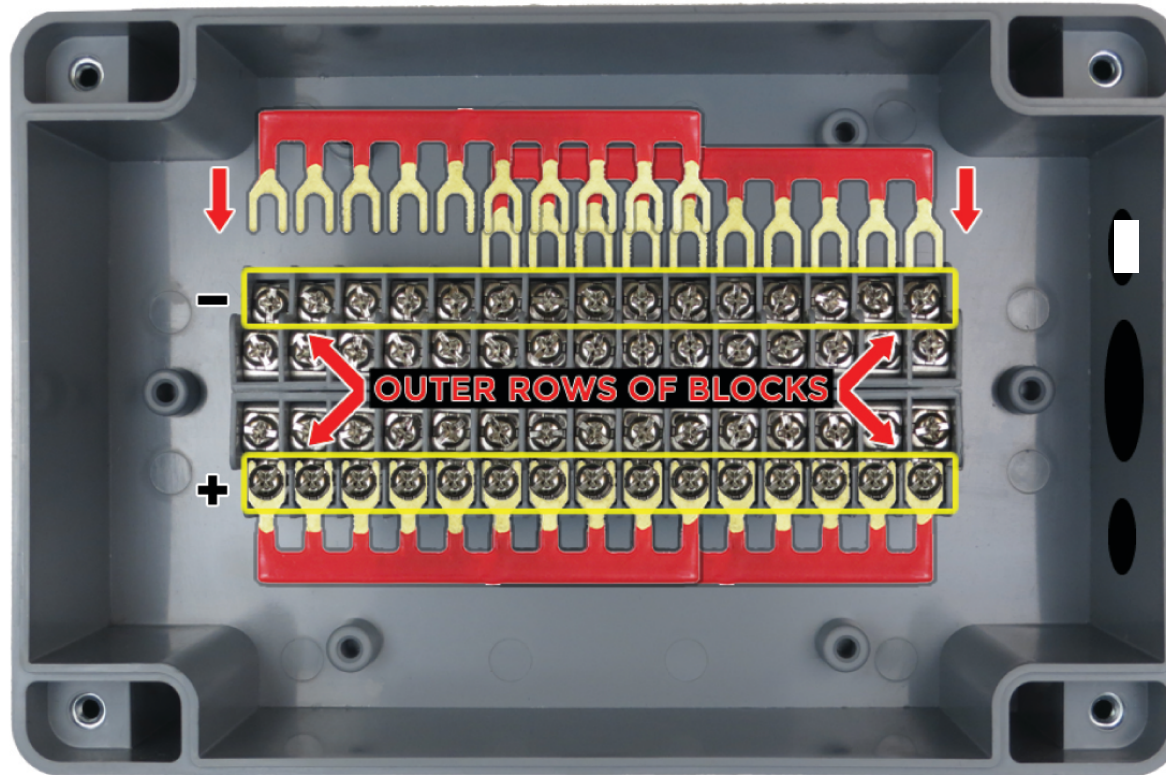


PRE-INSTALLATION CHECKLIST

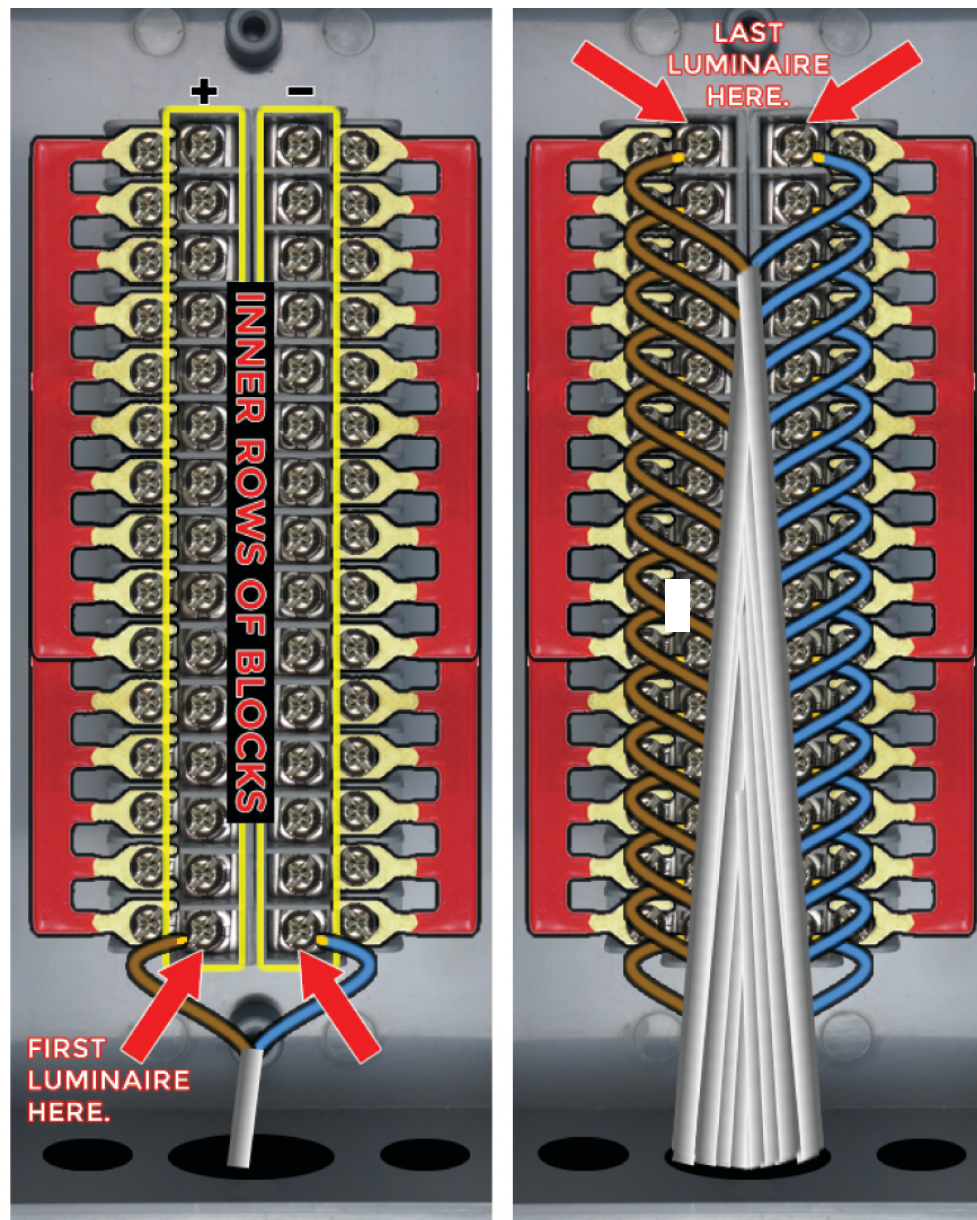
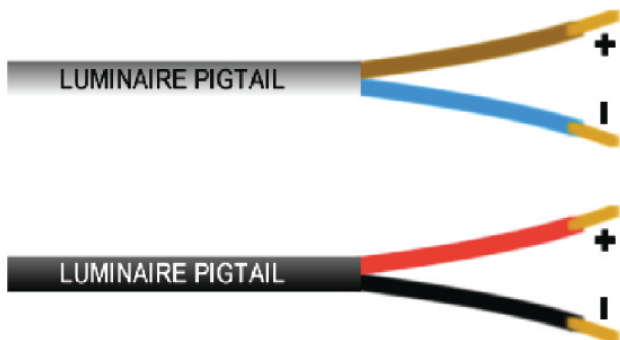
- 1) Always wear eye protection.
- 2) Wear gloves, if necessary.
- 3) Consult a licensed electrician about proper safety procedures and local and national codes and ordinances.
Ensure that the installing electrician understands voltage drop and wire-gauge limitations involving low-voltage lighting.
- 4) Ensure that your 110v/277v AC power source is operational and conforms to all codes and ordinances.
- 5) Inspect the labeling on the power supply to ensure that it is 12 volt DC. If it indicates 24 volt DC or any other voltage that is not 12 volt DC, do not continue with the installation, and contact us immediately.
- 6) Take stock of your kit items, ensuring that you have correct quantities of each item, per your kit



- 1) Set aside four red jumper-bars per terminal enclosure.
- 2) Loosen all the screws on the terminals
- 3) Insert the jumper-bars on the outer rows of blocks.
- 4) Allow jumper bars to overlap, ensuring that all fifteen blocks are bridged.
- 5) Tighten screws to secure jumper-bars in place.

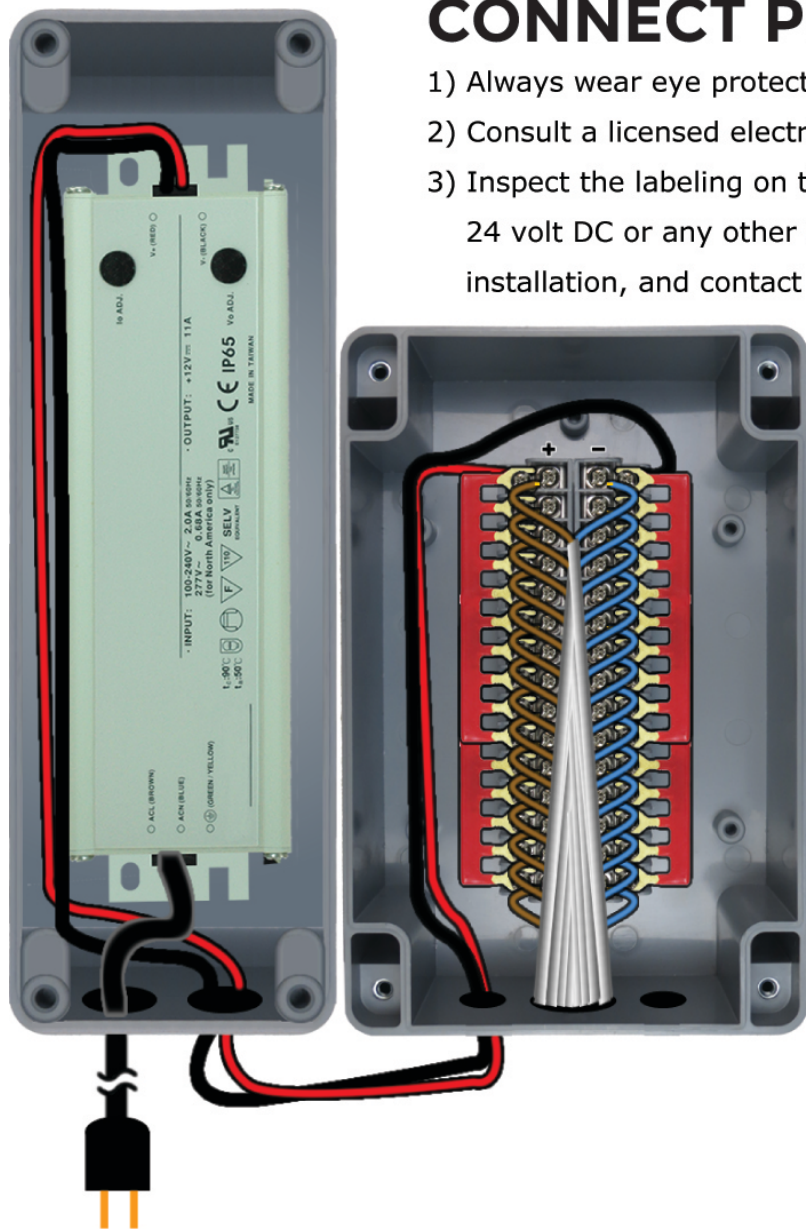


- 1) Strip the ends of the luminaire pigtails, exposing 1/4" (6mm) of copper lead.
- 2) Observing proper polarity, insert the pigtail leads into the inner rows of blocks, starting at the bottom.
- 3) Each consecutive pigtail overlaps the previous one. Screw blocks tight, to secure leads into place.
- 4) Repeat with the remaining fourteen luminaire pigtails, from bottom to top, illustrated to the right
- 5) Note: leads may come as:
(+) Red and (-) Black, or
(+) Brown and (-) Blue.

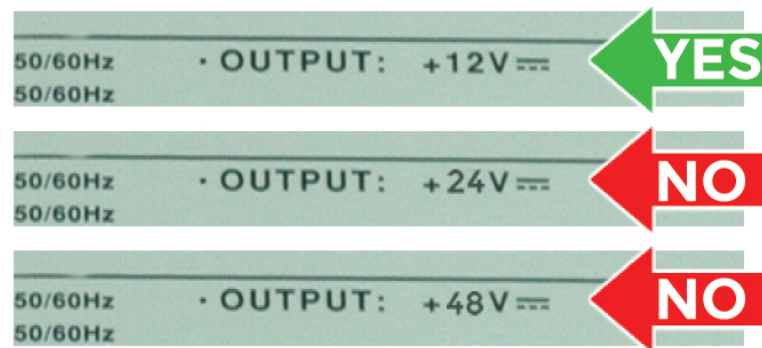


CONNECT POWER SUPPLY

- 1) Always wear eye protection.
- 2) Consult a licensed electrician on local and national safety codes and procedures.
- 3) Inspect the labeling on the power supply to ensure that it is 12 volt DC. If it indicates 24 volt DC or any other voltage that is not 12 volt DC, do not continue with the installation, and contact us immediately.

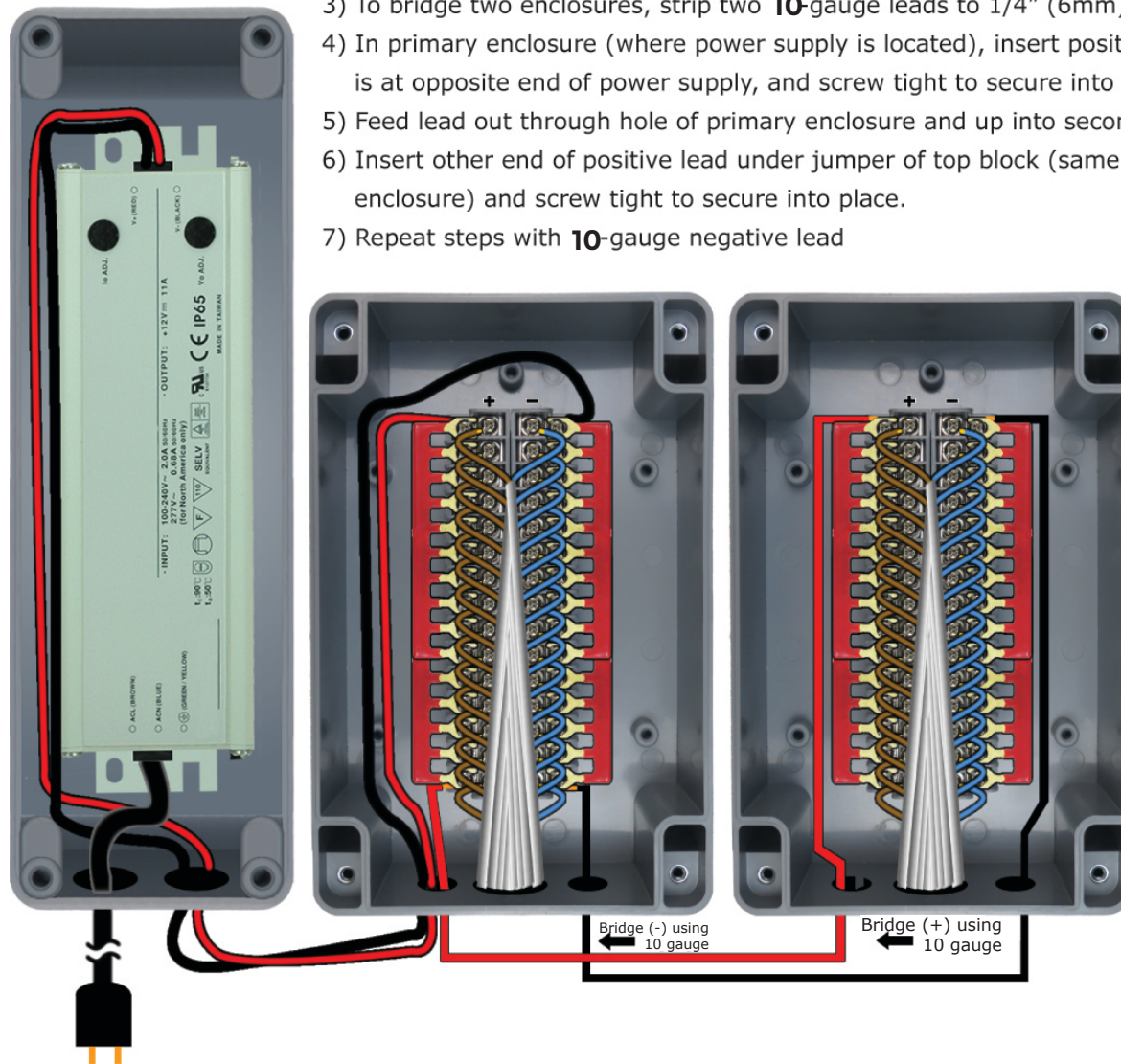


- 4) Place 12volt DC power supply inside the included, separate power supply enclosure.
- 5) Feed line-voltage cable through bottom of enclosure and splice appropriate plug end for corresponding line voltage.
- 6) Strip leads (V+ red and V- black) from the 12 volt end of power supply to 1/4" (6mm) of exposed copper.
- 7) Feed 12 volt leads out of power supply enclosure and up into primary enclosure.
- 8) Noting correct polarity, insert leads into top pair of terminal blocks, under the jumper bars.
- 9) Screw blocks tight, securing power supply leads into place.

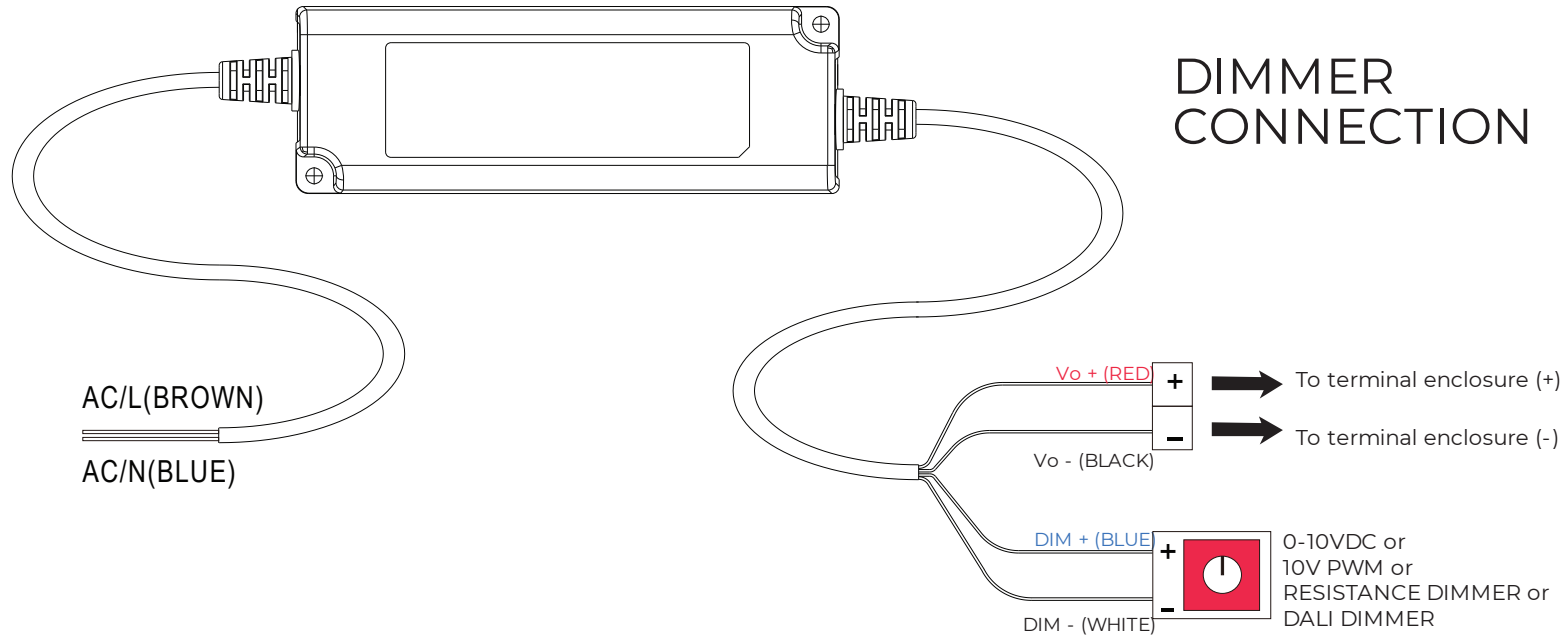


BRIDGING TWO ENCLOSURES

- 1) Always wear eye protection.
- 2) Consult licensed electrician to ensure compliance with local and national codes.
- 3) To bridge two enclosures, strip two **10-gauge** leads to 1/4" (6mm) exposed copper of appropriate length.
- 4) In primary enclosure (where power supply is located), insert positive lead under jumper of block that is at opposite end of power supply, and screw tight to secure into place.
- 5) Feed lead out through hole of primary enclosure and up into secondary enclosure.
- 6) Insert other end of positive lead under jumper of top block (same position as power supply lead in primary enclosure) and screw tight to secure into place.
- 7) Repeat steps with **10-gauge** negative lead



DIMMER CONNECTION



Before commencing any installation or maintenance, disconnect the power supply from the mains power. Ensure that it cannot be re-connected inadvertently. (Luminaires are not individually dressable)

A 10-15 cm clearance must be kept when an adjacent device is a heat source.

Mounting orientations other than standard orientation or operate under high ambient temperature may increase the internal component temperature and will require a de-rating in output current.

Current rating of an approved primary / secondary cable should be greater than or equal to that of the unit. Please refer to its specification.

For LED drivers with waterproof connectors, verify that the linkage between unit and lighting fixture is watertight so that water cannot intrude into the system.

For dimmable LED drivers, make sure that your dimming controller is capable of driving these units. PWM series require 0.15mA each unit.

Tc max. is identified on the product label. Please make sure that temperature of Tc point will not exceed limit.

DO NOT connect "DIM- to Vo-".

DO NOT dim on the mains side.