



PILLBOX MP



PORE MP



STOMA MP



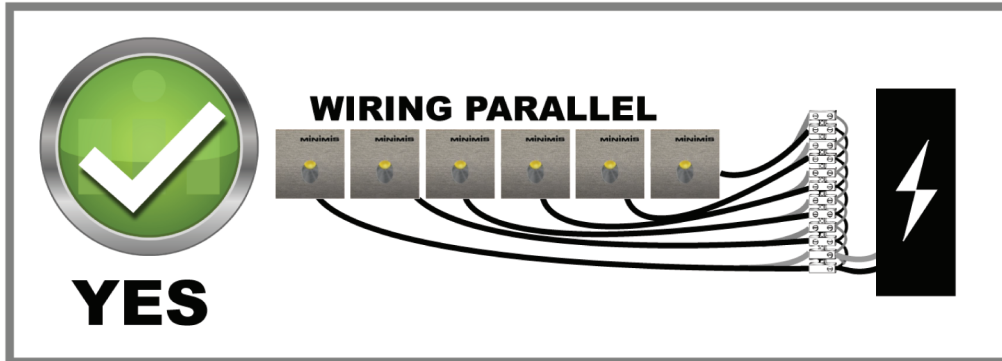
PINPRICK MP

MP SERIES INSTALLATION INSTRUCTIONS



NICK MP

NOTE: FAILURE TO ABIDE BY INSTRUCTIONS WILL LEAD TO FAILURE, AND INVALIDATE YOUR WARRANTY.



YES



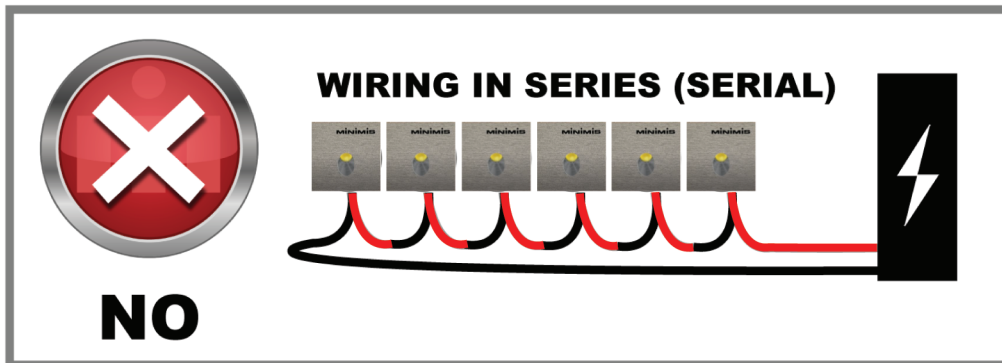
YES

12V DC
Constant voltage



NO

Constant Current
LED Driver



NO



YES

10V PWM or DALI
DIMMABLE
0-10V or Resistance



NO

12V AC

IP 67
Outdoor / wet location

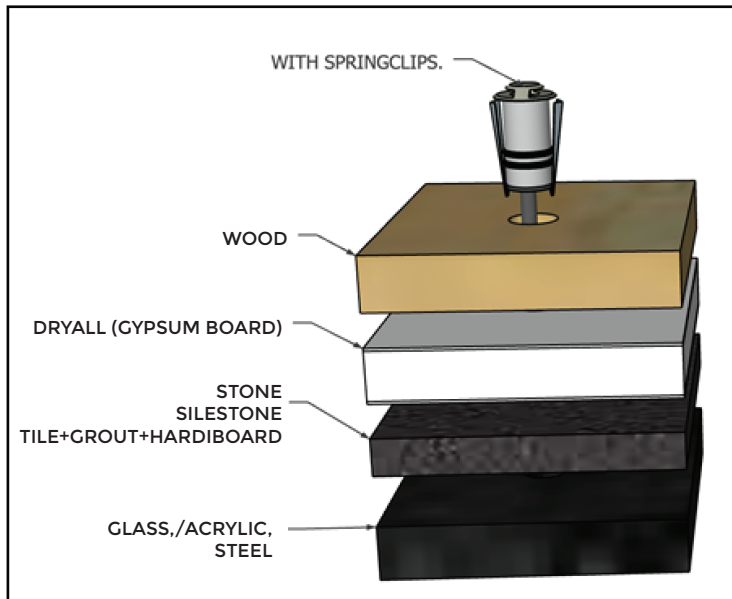
YES

IP 68
Submersible

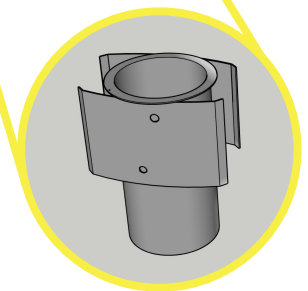
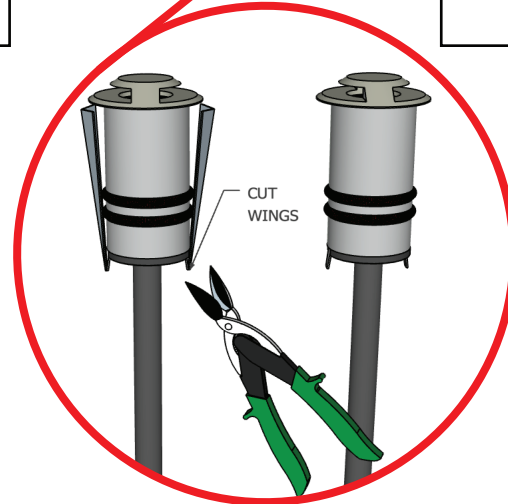
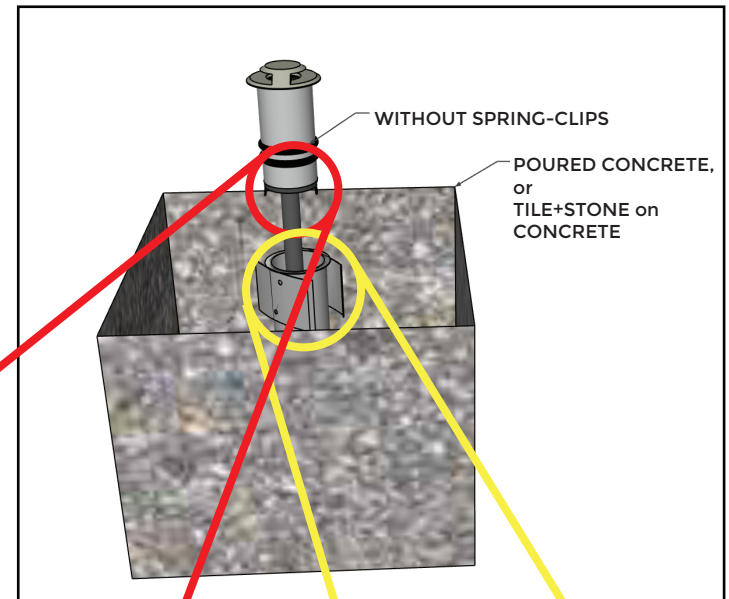
NO

FIRST, DETERMINE WHAT MATERIAL YOU'RE INSTALLING INTO.

OPTION ONE



OPTION TWO



TRIM-KIT
SOLD SEPARATELY

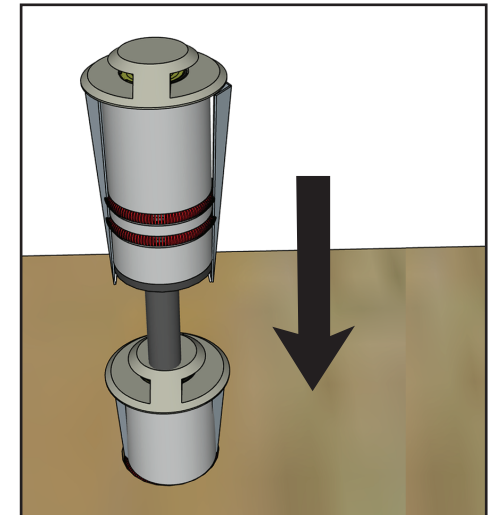
OPTION ONE



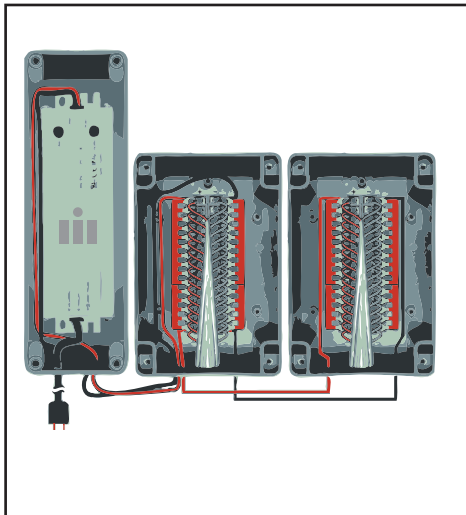
DO NOT REMOVE WINGS.



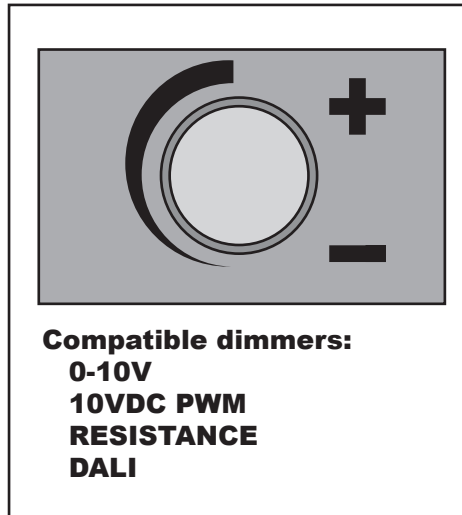
DRILL OR WATER-JET A 17MM-DIAMETER HOLE.



Feed pigtail in through hole, press luminaire into place.



Connect all luminaires in parallel to 12VDC power source.



Use appropriate dimmer.

RECOMMENDED (not included)

The MINIMIS MP Series Power Kit (UL listed)

- 12v DC IP67 Dimming transformer
- Weatherproof transformer enclosure
- Weatherproof terminal block enclosure
- Quick-jump bus-bars.

Available in configurations of:

- 1 to 15 luminaires
- 16 to 30 luminaires

More information at: www.MINIM.IS/power

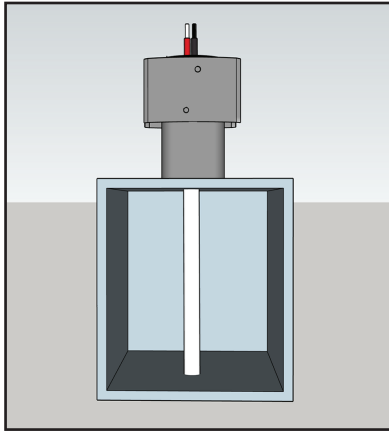
Contact us with any questions.

+1 512 402 7300
+1 512 402 5836
www.MINIM.IS

We recommend the MINIMIS MP Series Power Kit.

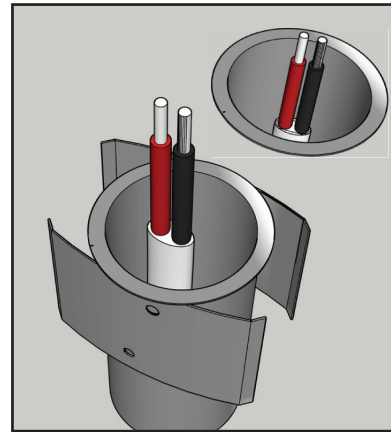
OPTION TWO - CONCRETE and TILE+CONCRETE INSTALLATION

CONTACT US TO PURCHASE TRIM KIT

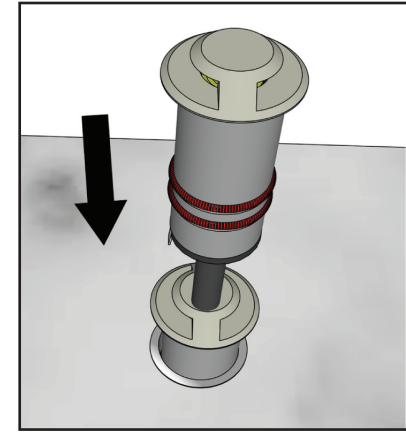


Set a standard junction-box and the MINIMIS Trim-Kit into place at desired position and elevation, ensuring that the top flange of Trim Kit will be flush with top surface of concrete. If necessary, use a length of PVC pipe between Trim-Kit and J-Box to achieve desired height. Ensure sufficient length of home-run cable extends past top of Trim-Kit.

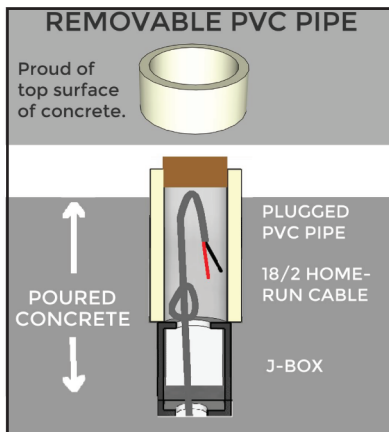
CONCRETE INSTALLATION



Pour concrete, smoothing and blending concrete to ensure that no concrete remains on top of flange of Trim-Kit. Ensure top of flange of Trim-Kit is flush, or flush-recessed, but NOT PROUD with top of the concrete. Allow concrete to set.

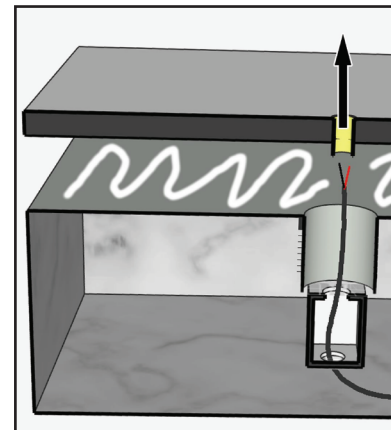


Once set, ensure inside of trim kit is totally devoid of all debris. Using appropriate gel-filled or other water-proof butt-splices suitable for your code, splice pigtail of luminaire to home-run cable, observing matching polarity. Feed pigtail in and press luminaire into place.

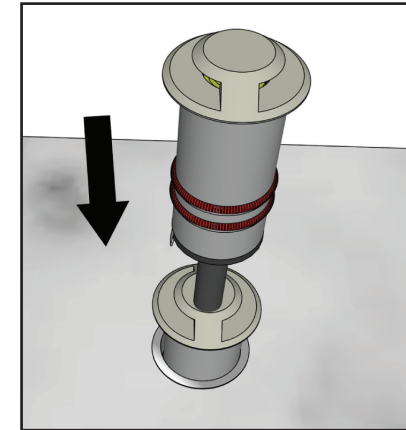


Set a standard junction-box and a length of PVC pipe of between 50mm and 60mm ID into place at desired position and elevation, ensuring top of PVC pipe is well-above projected top surface of concrete. Do not mechanically fasten PVC to J-Box, rather attach with masking tape for easy future removal. Ensure sufficient length of home-cable extends past top of PVC pipe.

TILE + CONCRETE INSTALLATION



Pour concrete to desired height. Press MINIMIS Trim-Kit into pre-drilled hole of tile. Once concrete has set, discard PVC pipe. Apply grout or adhesive and lower tile into place, while threading home-run cable up through Trim-Kit. J-Box may be optional; consult your electrician and flatworker.

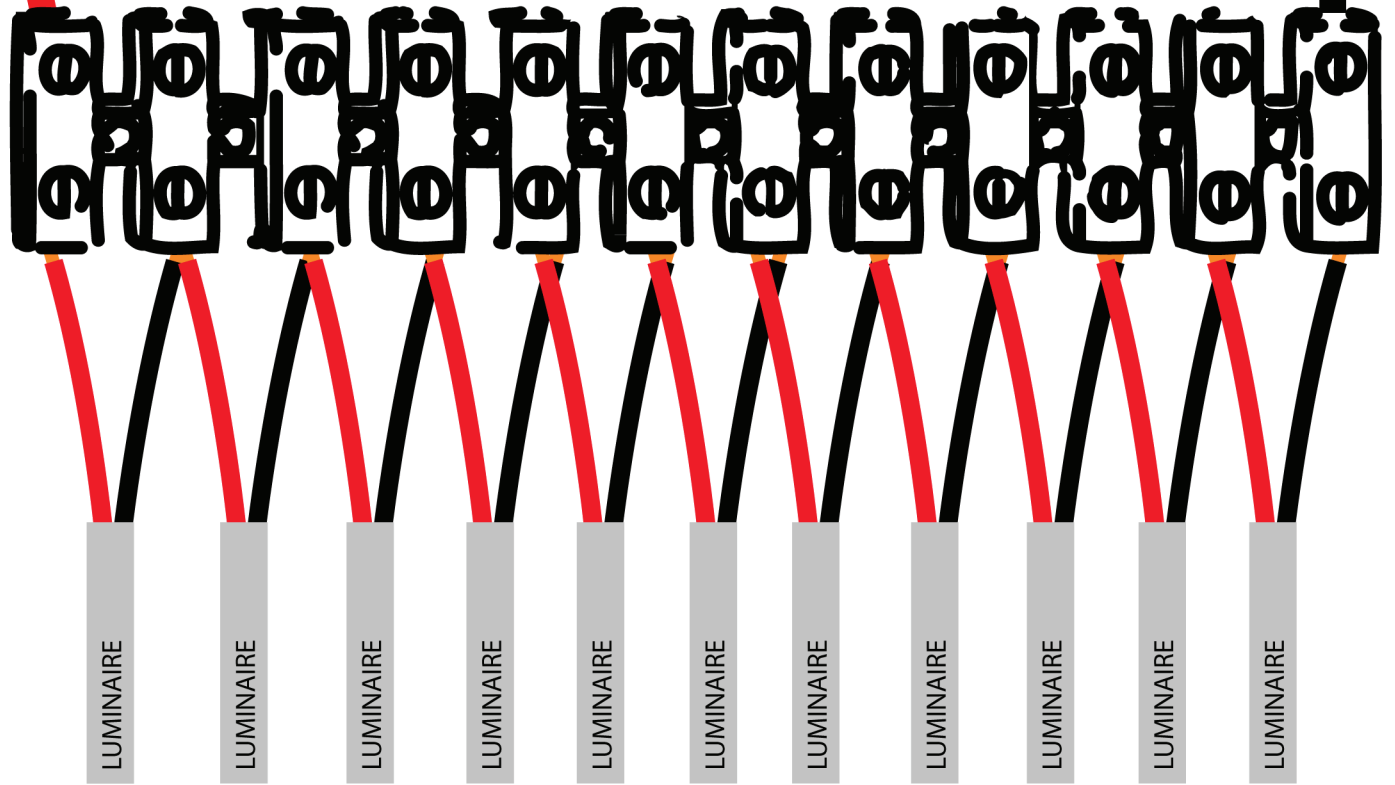


Ensure inside of trim kit is totally devoid of all debris. Using appropriate gel-filled or other water-proof butt-splices suitable for your code, splice pigtail of luminaire to home-run cable, observing matching polarity. Feed pigtail in and press luminaire into place.

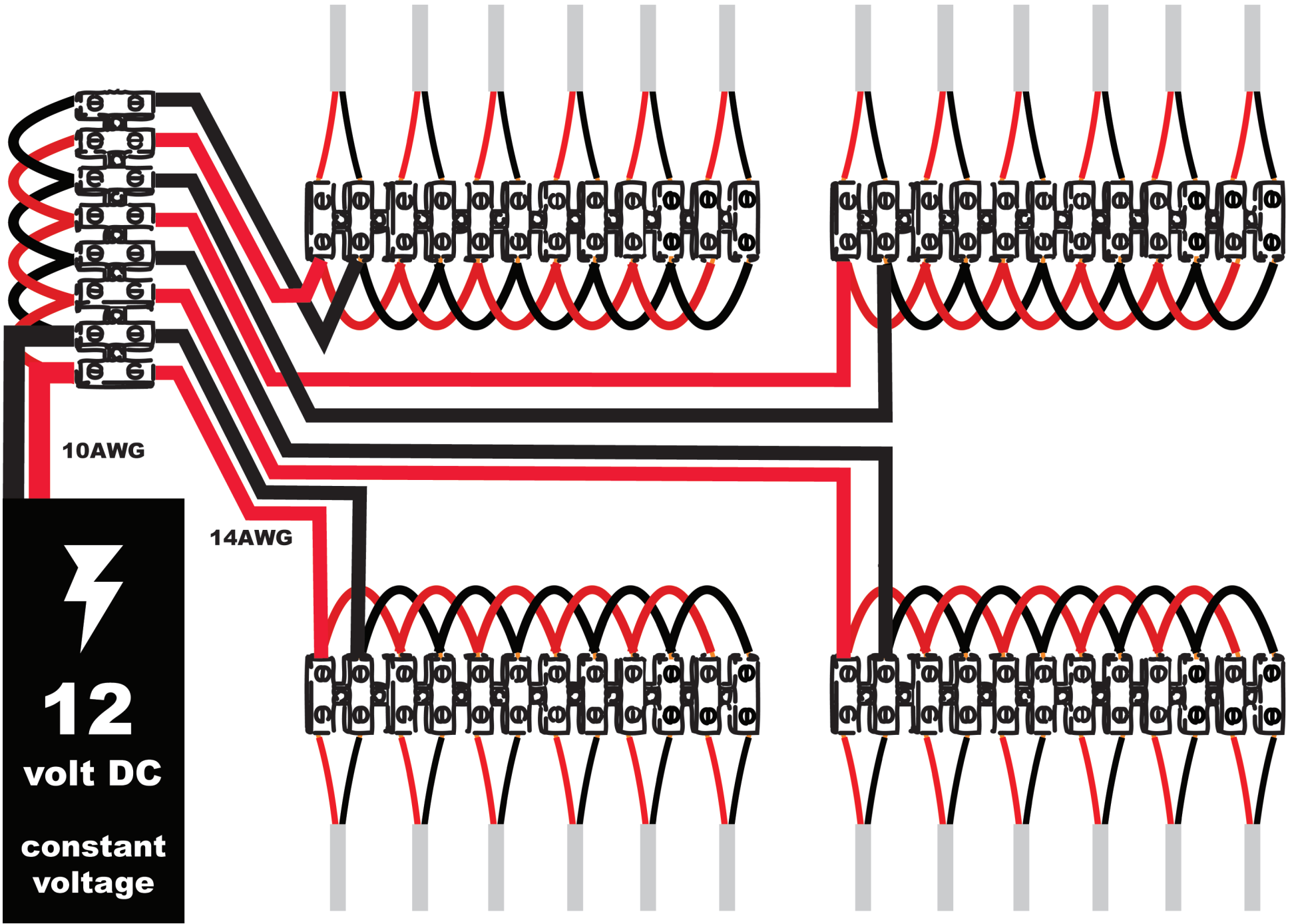
-
+
to power source



NO



**DO NOT
WIRE IN
SERIES**



10AWG

14AWG



12

volt DC

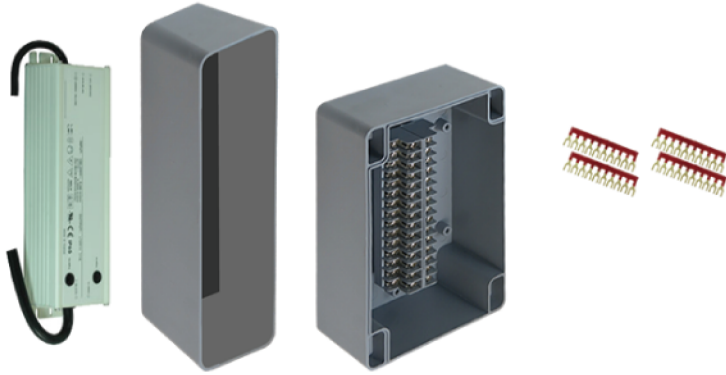
constant voltage

MP SERIES POWER KITS

www.MINIM.IS/power

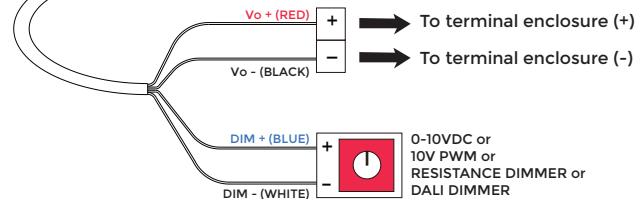
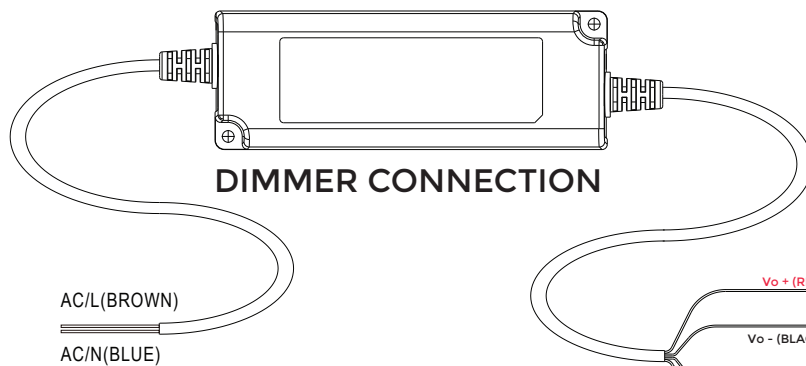
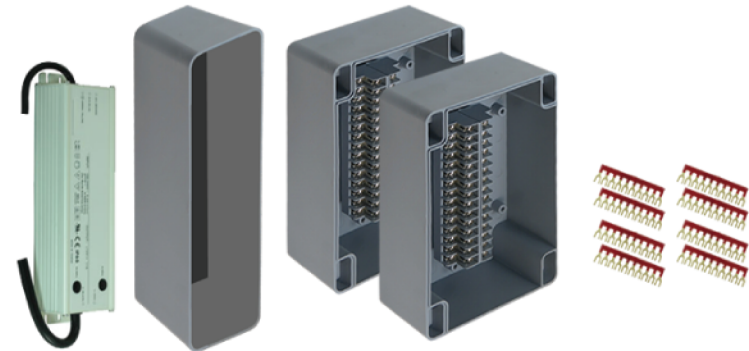
PKMP0115

MP SERIES POWER KIT
FOR 1 TO 15 APERTURES



PKMP1630

MP SERIES POWER KIT
FOR 16 TO 30 APERTURES



(Luminaires are not individually addressable)

